



Research

Cite this article: Albery GF, Newman C, Ross JB, MacDonald DW, Bansal S, Buesching C.

2020 Negative density-dependent parasitism in a group-living carnivore. *Proc. R. Soc. B* **287**: 20202655.

<https://doi.org/10.1098/rspb.2020.2655>

Received: 22 October 2020

Accepted: 23 November 2020

Subject Category:

Ecology

Subject Areas:

ecology

Keywords:

disease ecology, wild mammal, parasites, parasite avoidance, density dependence

Author for correspondence:

Gregory F. Albery

e-mail: gfalbery@gmail.com

Electronic supplementary material is available online at <https://doi.org/10.6084/m9.figshare.c.5230393>.

Negative density-dependent parasitism in a group-living carnivore

Gregory F. Albery¹, Chris Newman², Julius Bright Ross², David W. MacDonald², Shweta Bansal¹ and Christina Buesching^{2,3}

¹Department of Biology, Georgetown University, Washington, DC, USA

²Wildlife Conservation Research Unit, The Reanati-Kaplan Centre, Department of Zoology, University of Oxford, Oxford, UK

³Irving K. Barber Faculty of Sciences, Okanagan Department of Biology, The University of British Columbia, Kelowna, British Columbia, Canada

GFA, 0000-0001-6260-2662

Animals living at high population densities commonly experience greater exposure to disease, leading to increased parasite burdens. However, social animals can benefit immunologically and hygienically from cooperation, and individuals may alter their socio-spatial behaviour in response to infection, both of which could counteract density-related increases in exposure. Consequently, the costs and benefits of sociality for disease are often uncertain. Here, we use a long-term study of a wild European badger population (*Meles meles*) to investigate how within-population variation in host density determines infection with multiple parasites. Four out of five parasite taxa exhibited consistent spatial hotspots of infection, which peaked among badgers living in areas of low local population density. Combined movement, survival, spatial and social network analyses revealed that parasite avoidance was the likely cause of this negative density dependence, with possible roles for localized mortality, encounter-dilution effects, and micronutrient-enhanced immunity. These findings demonstrate that animals can organize their societies in space to minimize parasite infection, with important implications for badger behavioural ecology and for the control of badger-associated diseases.

1. Introduction

A wild animal's infectious disease burden is determined by its exposure and susceptibility to infective pathogens. Typically, higher population density results in increased contact rates and thus greater exposure [1,2]; however, sociality carries immunological and hygienic benefits that can counteract this exposure-exacerbating effect [3,4]. For instance, cooperative foraging improves nutrition, alleviating infection costs [5]; mutual grooming removes ectoparasites [6–8]; and 'social immune responses' maintain collective group health [9,10], e.g. through extirpating sick individuals [11]. Additionally, the environmental distribution of resources can influence spatial behaviour [12–14] and determine local population densities [15], while altering susceptibility [16] and transmission efficiency [17]. Sociality and disease may thus be confounded through shared causal origins rather than being mechanistically linked [17]. Finally, individuals can minimize exposure by avoiding environmental cues [18,19] or infected conspecifics [8,20], creating a population-level 'landscape of disgust' analogous to predatory 'landscapes of fear' [21,22]. These processes could produce negative density effects, sometimes depending on parasite transmission mode [1,17,23], but their role in defining observed density–infection relationships is poorly understood.

Uncertainty concerning density–infection relationships largely arises because studies of social effects are often carried out across discrete groups [1,24], between populations [25,26], or between species (e.g. [1,2,24,27]). Continuous density measures are rarely linked to parasite burden within one contiguous host population, and studies that do so generally use purely social metrics rather than

spatial density gradients (e.g. [28–30]). Continuous spatial density measures are advantageous because: density is a continuous, spatially explicit variable [31–33]; for the many parasites that are spread through the environment, spatial density measures better represent transmission than direct (social network) metrics [17,34–36]; and between-population and cross-species comparisons are fraught with confounding factors such as shared environmental causality or compensatory evolutionary changes [1,3], which within-population studies can more easily avoid or overcome. Furthermore, accounting for spatial effects may help anticipate or test the caveats of cooperation, environmental causality, and behavioural avoidance outlined above.

European badgers (*Meles meles*) are nocturnal, ground-dwelling mustelids with a pan-European distribution, eating a varied diet composed largely of earthworms [37]. Badgers are of particular interest for cattle health in the United Kingdom because of their role in maintaining and spreading bovine tuberculosis [37,38]. Although intended as a control measure, intense culling perturbs badger social systems, causing stressed survivors to disperse, thereby spreading bovine tuberculosis to neighbouring farms [39–41]. Understanding badgers' socio-spatial behaviours and their epidemiological implications is therefore an important research priority (e.g. [38,42–44]). The demography, behaviour, and parasitism of badgers in Wytham Woods, Oxfordshire, have been studied continuously since 1987 [37,45]. Dens (termed 'setts') are situated dependent on soil composition and landscape topography [46]. These badgers reside in cohesive mixed-sex social groups, with around 35% consistent philopatry; however, these groups are also fluid: 16.4% of individuals are trapped at a different social group to their previous capture history and 19.8% away from their natal group [47]. Furthermore, from genetic pedigree, 48% of cubs have extra-group paternity [48]. Badgers host several arthropod parasites, including badger-specific fleas (*Paraceras melis*) and lice (*Trichodectes melis*) and generalist ticks (*Ixodes* sp.) [49]. They also carry two gastrointestinal protozoans: *Eimeria melis* and *Isospora melis*. *E. melis* predominantly infect young individuals, causing substantial mortality [50,51]. Although studies have examined social grooming effects on ectoparasite burden [6,52] and roles of denning behaviour in parasite transmission [49], the within-population spatial-social parasite epidemiology has yet to be investigated.

Here, we investigate parasite burdens in the Wytham badger population and their associations with spatial and social behaviour. We establish parasite distributions using spatial autocorrelation models. We quantify social drivers using both spatial density gradients and social network metrics, postulating that greater badger densities would drive higher parasite burdens through increased exposure. Finally, we examine survival effects, investigating whether parasite-linked mortality might alter spatial patterns of badger population density. We consider a range of potential social/spatial covariates of parasite burden, including density-related exposure changes, benefits of cohabitation, condition/susceptibility effects, encounter-dilution effects, and parasite avoidance behaviours.

2. Methods

(a) Data collection

Badgers were sampled as part of a long-term study in Wytham Woods, Oxfordshire, UK (51.778°N, 1.313°W), established in

1987 and recording one of the highest local badger densities ever reported [37,45]. Badgers were trapped overnight at their setts in steel-mesh cages baited with peanuts, collected the next morning, transported to a handling facility, and sedated. Individuals were identifiable by tattoo, applied on first trapping (typically as cubs). Measures were taken of head-body length (mm) and weight (to the nearest 0.1 kg). We calculated a standardized index of body condition dividing $\log(\text{weight})$ by $\log(\text{body length})$. The population was trapped seasonally (winter: Jan/Feb/March; spring: April/May/June; summer: July/Aug/Sept; autumn: Oct/Nov/Dec) in four quadrants, for 3 days per quadrant. Our dataset included 9016 captures of 1369 badgers spanning 29 years (1990–2018).

The population currently comprises 23 social groups (mean group size = 11; range 2–29 individuals), each using more than one sett, with sett/social group affiliation established using bait-marking [46,53]. Badgers were assigned to groups using established residency rules [48]. We computed social networks based on co-trapping using a 'gambit of the group' approach, where individuals trapped in the same sett in the same year were assumed to have interacted [54].

Fleas (*Paraceras melis*) were counted during a stereotyped 20 s inspection of the badger's full body, and ticks (*Ixodes* sp.) and lice (*Trichodectes melis*) were counted within a 4 × 4 cm square of preferentially parasitized skin near the groin (per Cox *et al.* [49]). Faecal sampling for two protozoan endoparasites, *Eimeria melis* and *Isospora melis*, was carried out through 1993–1997 and 2009–2017 (N = 1287 counts). Endoparasite oocysts were counted using salt flotation and microscopy [51,55]. Each count was duplicated, and data were reduced to a binary infected/uninfected status (rather than counts) because of their highly overdispersed distribution.

(b) Statistical analysis

(i) Covariates

Statistical analysis and data manipulation used R v. 3.6.0 [56]. All data and code are available at https://github.com/gfalbery/Badgers_PRSB. Models were constructed using the 'inla' package [57,58]. Response variables included counts of fleas and lice (negative binomial distribution) and prevalence of ticks, *Eimeria* and *Isospora*. Explanatory covariates included: Year (continuous), Month (categorical), Age Category (categorical: cub, yearling, and adult), Sex (male and female), and Body Condition (continuous). Continuous covariates were standardized (mean = 0; standard deviation = 1). Individual Identity and Year were fitted throughout as categorical random effects.

Spatial autocorrelation models. To identify generalized spatial patterns, we first fitted models accounting for continuous spatial autocorrelation across the population [33,57,58]. We fitted a base model using only Year, Month, Age Category, and Sex, with individual and annual random effects. We then added a Stochastic Partial Differentiation Equation (SPDE) random effect controlling for spatial autocorrelation in the response variable in space, based on individuals' point locations. We then compared these models using the Deviance Information Criterion (DIC) to establish whether accounting for spatial autocorrelation improved model fit; models within 2ΔDIC were judged competitive.

Density models. We then fitted models that replaced the SPDE effects with individual measures of local population density. Models included a range of social/spatial density measures, calculated using various methods. Spatial density metrics represent numbers of individuals in a given space and therefore tread the line between social and spatial behavioural traits [17]. We computed these by creating space use distribution kernels with the 'adehabitathr' package in R [59]. We rasterized the usage distribution, assigning each individual a local density based on the raster value for their map location (figure 1*a,b*). Measures included: (i) **Lifetime density**: the density of individuals'

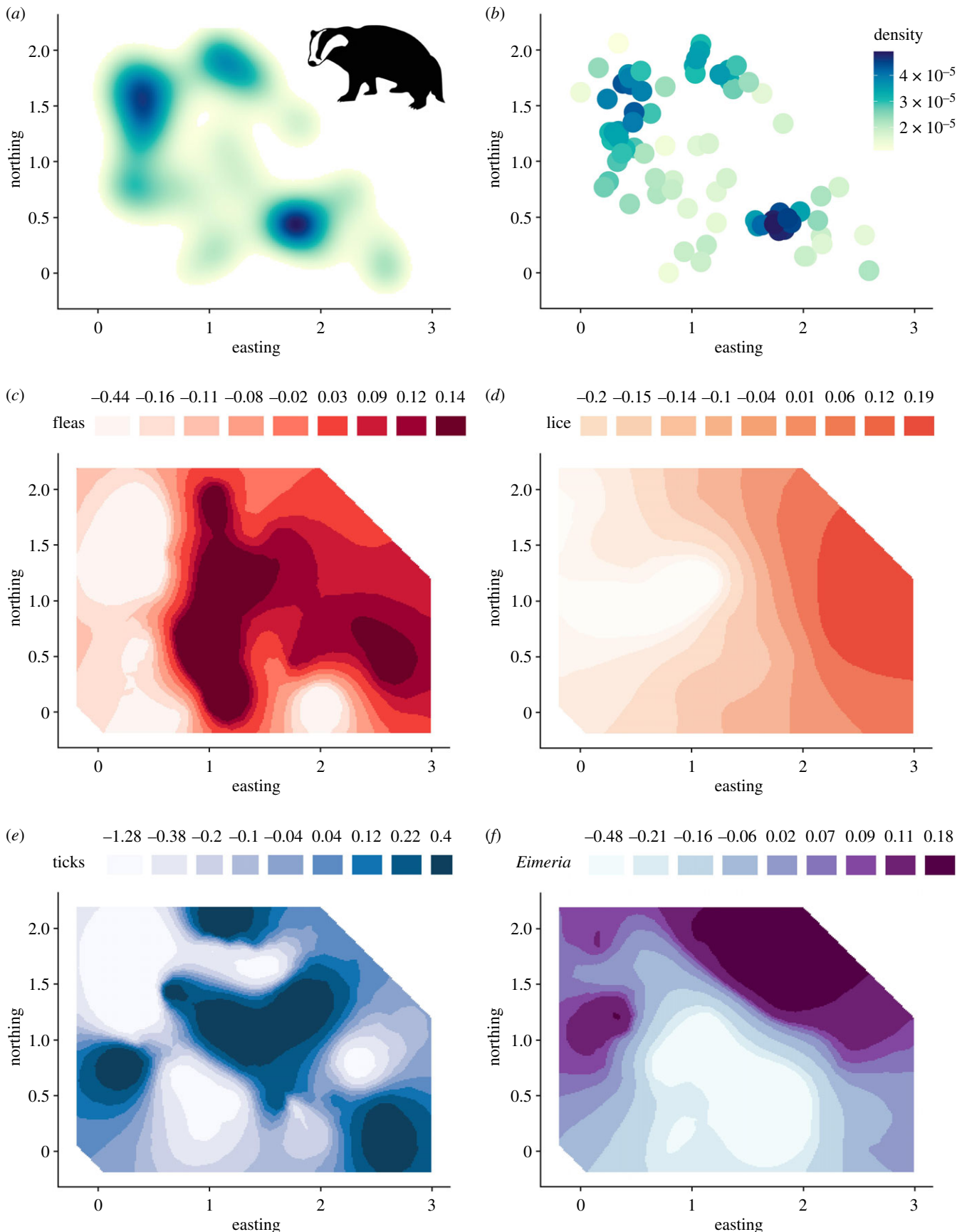


Figure 1. Spatial distributions of badger population density and parasites in Wytham Woods, Oxfordshire, between 1989 and 2018. (a) Badger population density distributed across Wytham Woods, calculated based on a space use kernel for individuals' annual centroids. (b) Individual badgers trapped at setts (represented by points) were assigned a local density value based on their location on the rasterized space use kernel. Darker blue colours in A and B correspond to greater population density. (c–f) The spatial distribution of the four spatially distributed parasites, estimated using the INLA SPDE effect. Darker colours correspond to increased parasitism. The density values in B were fitted as covariates in linear models to explain individual parasite burdens, revealing a negative correlation between density and parasitism (figure 2). All axes are in kilometres, with the 0,0 point at the bottom left of the study area. We examined a fifth parasite, *Isoospora melis*, but it was not significantly spatially distributed (table 1). Badger silhouette is from phylopic.org, credit Anthony Caravaggi (CC BY-NC-SA 3.0). (Online version in colour.)

centroids across the study period. (ii) **Trapping density**: the density of trapping events, incorporating multiple captures of the same individual per year. (iii) **Annual density**: the density of individuals' centroids in the sampling year, calculated from annual density kernels. Only one spatial density measure was allowed in a given model, as the measures correlate ($R > 0.5$) and co-fitting several measures produced spurious, unexpected correlations in the opposite direction expected from data exploration. We also used two social metrics based on co-trapping patterns. **Degree centrality** was the number of unique badgers with whom each individual was trapped in the same sett per year. **Group size** was the total number of individuals trapped in a given social group per year. Following spatial autocorrelation model procedures, we conducted a model selection procedure for behavioural metrics, using $2\Delta\text{DIC}$ as the cutoff, and only including the best-fitting metric. We conducted these models for the overall dataset ($N = 9016$); adults only (age 2+, fitting age in years as a fixed covariate; $N = 6159$); and juveniles only ($N = 1639$). For these models, we display only the best-fitting metric, and for the overall dataset, if it exhibited a significant trend (and a subset-only model otherwise).

Multi-response models. To investigate whether parasites covaried with badger density at the within- or between-individual level, we constructed multi-response models in MCMCglimm with an unstructured covariance matrix [60,61]. We fitted parasites and local density as response variables, estimating their covariance when accounting for other fixed effects and decomposing this covariance at the within- and between-individual level. A negative within-individual (residual) correlation would imply that higher burden/prevalence individuals (compared to their baseline) moved to lower density areas during their lives, supporting either social ostracism or sickness behaviours. By contrast, negative between-individual covariance would imply that individuals inhabiting lower densities generally had inherently greater parasitism. We only constructed these models for parasite–host age category combinations that demonstrated density effects in the INLA models.

Survival models. To investigate parasites' mortality effects, we fitted models with survival as a binary response (1 = animal seen in any subsequent year; 0 otherwise). These models included the same covariates as the parasite models, plus parasite prevalence/count and badger density measures. Parasite measures were either $\log(x + 1)$ -transformed integers (fleas, lice) or binary (ticks, *Eimeria*, and *Isospora*). We conducted another model selection procedure, adding parasite metrics successively if they improved model fit. This was carried out for adults and juveniles separately.

3. Results

INLA autocorrelation models revealed considerable spatial structuring of parasite burdens. Models for 4/5 parasites were substantially improved by incorporating spatial effects ($\Delta\text{DIC} > 8$; table 1). Only *Isospora*'s model was not improved by spatial autocorrelation (table 1).

Density models provided substantial support for negative associations between badger density and parasite infection. Including at least one density measure as a covariate improved the model for at least one age category for 4/5 parasites; all had significant negative slopes for density effects (figure 2; electronic supplementary material, figure SI1–4; table SI1–3). Slopes were relatively shallow, but extremely significant and robust (figure 2). Flea counts were best described by Lifetime Density for the overall model ($\Delta\text{DIC} = -16.31$; $p < 0.0001$; figure 2a), while lice burdens decreased with Trapping Density in the juveniles-only model ($\Delta\text{DIC} = -8.77$; $p = 0.0017$;

Table 1. DIC changes associated with spatial autocorrelation terms for the five examined parasites. Lower numbers denote better models; best-fitting models $\Delta\text{DIC} = 0$. All models except *Isospora* were improved by the addition of spatial fields (SPDE).

	fleas	lice	ticks	<i>Eimeria</i>	<i>Isospora</i>
base	153.03	36.57	49.25	8.28	0
SPDE	0	0	0	0	2.25

figure 2b). Tick prevalence was lower in areas of higher Lifetime Density ($\Delta\text{DIC} = -2.47$; $p = 0.0038$; figure 2c), and *Eimeria* prevalence was lower with greater Trapping Density ($\Delta\text{DIC} = -5.83$; $p = 0.0053$; figure 2d). Only one positive social effect was detected: adults with a greater degree had slightly more lice ($\Delta\text{DIC} = -2.39$; $p = 0.027$; electronic supplementary material, figure SI2). All DIC changes associated with the model addition procedure are presented in electronic supplementary material, table SI1–3.

MCMCglimm multi-response models revealed similar trends to INLA univariate models (electronic supplementary material, figure SI1–4) and allowed us to decompose density–parasite correlations into within- and between-individual changes (figure 3b). Correlations were greater and much more significant between- than within-individuals in all cases (figure 3b). This demonstrates that movement between high- and low-density areas was unlikely to produce changes in parasite burden over an individual's lifetime, but rather than individuals' home ranges exhibited inherently different local density–parasite relationships. Only louse infection predicted survival probability; the effect was relatively small, minimally significant, and specific to juveniles ($p = 0.038$; figure 3a).

Our models also revealed various other effects (electronic supplementary material, figures SI1–4). Briefly, in the overall models, juveniles had fewer fleas, more lice, and greater *Eimeria* prevalence than did yearlings and adults, and lower *Isospora* prevalence than adults (electronic supplementary material, figure SI1). Males had more lice than did females, with substantial monthly variation in all parasites (electronic supplementary material, figure SI1). Additionally, body condition was negatively associated with fleas, lice, and *Eimeria* infection in all age/sex classes (electronic supplementary material, figure SI1). The adults-only and juveniles-only models were very similar to the overall models (electronic supplementary material, figures SI1–3); notably, in adults, lice burden increased with age in years, whereas *Eimeria* and *Isospora* prevalence decreased (electronic supplementary material, figure SI2).

4. Discussion

Using a combination of spatial and social network analysis, we uncovered negative associations between local population density and multiple parasites in this wild group-living carnivore. We found strong but contrasting spatial structuring of fleas, lice, ticks, and *Eimeria*, and, contrary to expectations, all four were most prevalent or abundant in areas of lowest badger density. Co-trapping network and grouping metrics were not predictive of parasitism, implying that 'direct' social behaviours, such as mutual allo-grooming, were unlikely to explain the negative density effects. Additionally, badger

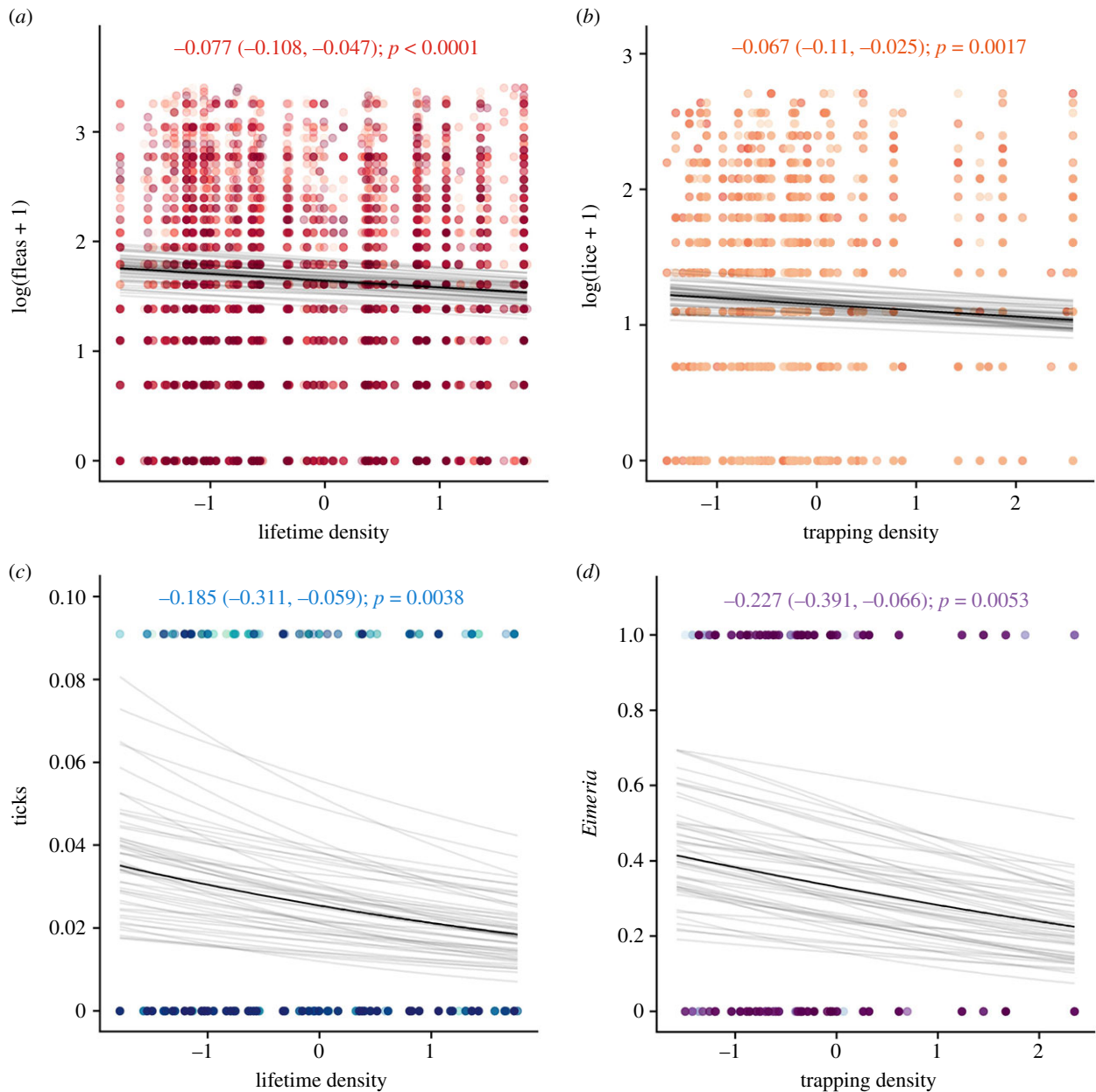


Figure 2. Negative associations between population density and parasite infection. Badgers living at higher densities had fewer fleas (a), fewer lice (b), lower tick prevalence (c), and lower *Eimeria melis* prevalence (d). B represents juveniles only. Points represent individual samples, with colours randomized along a colour palette for plotting clarity. Opaque black lines are derived from linear model fits, taking the mean of the posterior distribution. Transparent grey lines represent 100 fits drawn randomly from the posterior estimate distributions of each model, to demonstrate error in the slope and intercepts. Text at the top of the figures communicates slope estimates, with lower and upper 95% credibility intervals in brackets, and p values. NB: in (c), the y-axis scale and the location of the positive points have been altered for plotting clarity and to better visualize the slope, due to low tick prevalence. (Online version in colour.)

density effects manifested independent of survival and body condition effects, implying that spatial structuring of the host population did not originate from: (i) localized host mortality, (ii) reduced susceptibility arising from co-habitation and implied cooperation benefits [3,5], or (iii) greater local resource availability influencing susceptibility [16,62,63]. Additionally, multi-response models revealed low within-individual covariance between density and parasites, providing little support for heavily parasitized individuals becoming ostracized during the course of their lives [11]. Taking spatial structuring together with setts' propensity to harbour parasites [49,64], the most parsimonious interpretation is that badgers avoid infection behaviourally, preferring to inhabit areas poorly disposed to parasite transmission (table 2). These individual-level avoidance behaviours amplify at the population level to produce the patterns of badger density inversely related to parasite

distributions in the environment, as expected under a 'landscape of disgust' [19,21,22]. As well as providing rare evidence of non-consumptive effects of parasites in a wild carnivore, these results imply that animals can arrange their society in space according to parasite transmission.

Our study demonstrates observationally that parasites can determine a society's structure in the environment, and that this phenomenon may counteract the more conventional prediction that host density exacerbates parasitism through increased exposure (e.g. [1,2,67]). Consequently, studies aiming to quantify social covariates of disease should explicitly seek to investigate individual movement and avoidance behaviours, socio-spatial structuring, and feedbacks between sociality and space use [17]. Previous studies on other mammals have revealed avoidance of infected conspecifics [8] and faeces [18,68], but it remained unclear whether animals avoid spatial

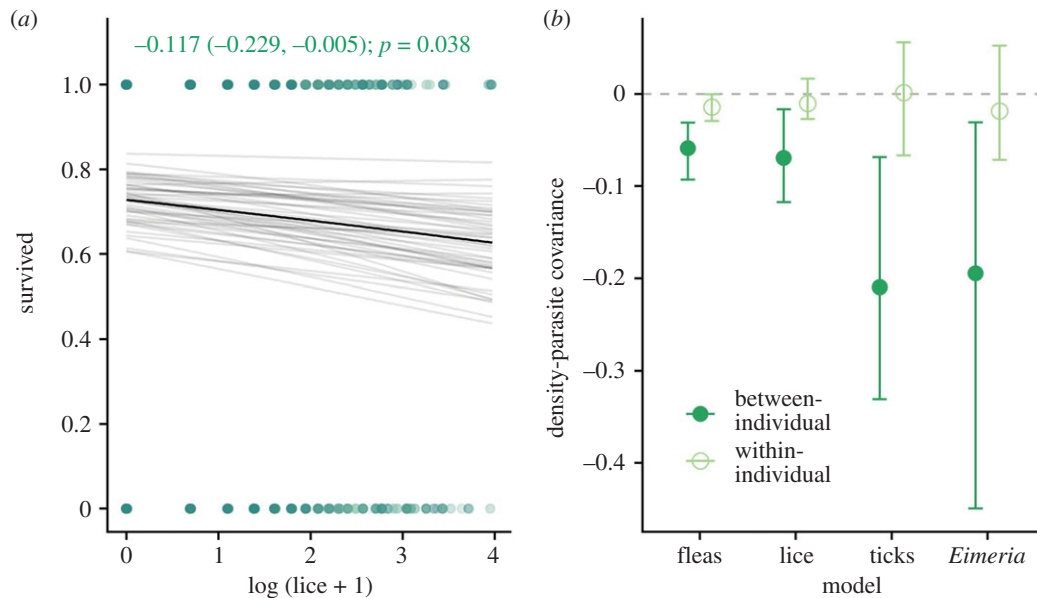


Figure 3. Associations of parasitism with survival and density-parasitism covariance partitioning. (a) Louse burden was negatively associated with individual survival probability in juveniles. Opaque black line = linear model fit. Transparent grey lines = 100 fits drawn randomly from the posterior estimate distribution, to demonstrate error in the slope and intercept. Text at the top of panel *a* communicates slope estimate, with lower and upper credibility interval in brackets and *p* value. (b) Estimates for within- and between-individual covariance between parasitism and density, taken from MCMCglmm multivariate models. Points = posterior mean effect size estimates; error bars = 95% credibility intervals. (Online version in colour.)

Table 2. Reasoning surrounding our hypothesis testing. We rejected most hypotheses for our observed negative density effects other than parasite avoidance.

potential mechanism	conclusion	reason for conclusion
co-habitation/ cooperation benefits	no	no direct social effects or competition with body condition effects (Model Set 2; Figure S11–3)
allo-grooming	no	spatial rather than direct social effects; grooming not possible for endoparasites (Model Set 2; Figure S11–3; Table S11–3)
nutrition-associated immune benefits	no	no competition with body condition effects (Model Set 2; Figure S11–3)
social ostracism/self-isolation	no	low within-individual covariance of density and parasitism (Model Set 3; figure 3b)
encounter-dilution	untested	possible for generalist ticks, but not for the other (badger-specific, non-mobile) parasites [65,66]
micronutrient effects on immunity	untested	could be tested in the future by examining the landscape of immunity and correlations with parasites [33]
local host die-offs	~no	possible for lice, in juveniles, but no other mortality effects were evident (Model Set 4; figure 3a)
avoidance	yes	other possibilities eliminated; consistent with individual-level behavioural responses [64]

hotspots of transmission themselves, and whether these could have population-level consequences [21,22]. Badgers respond to social scent cues and may use these to detect and avoid infested or infectious individuals [69]; furthermore, they move between setts regularly to avoid accumulating parasites [64,70], abandoning highly infested setts and chambers [49]; we posit that this behaviour has emergent population-level consequences. Wytham badgers preferentially establish their setts on northwest-facing slopes in areas with sandy soils [46], and variation in internal sett temperature and humidity are associated with reproductive success [71,72]. Our data suggest additional selection for sett traits and sites resistant to parasite infestation and transmission, which produce an emergent trend for fewer setts, with fewer occupants, in more highly parasitized areas. Quantifying parasites in the environment or inside setts and correlating them with badger behaviour could provide support for this hypothesis. Environmental (sett chamber-based) data on parasite presence would be

needed to determine whether badgers avoid infection *actively* (pre-infection), using environmental cues that predict parasitism, or *reflexively* (post-infection), by moving away from areas of high parasitism due to irritation or sickness.

Four parasites exhibited negative density effects, which could impose tradeoffs on avoidance behaviour. The parasites' distributions were highly contrasting, likely driven by different environmental factors: for example, sett microclimates favouring flea survival will facilitate their transmission [49,64]; similarly, *Eimeria* is transmitted faecal-orally, and oocysts are likely acquired from warm, moist sett chambers, which may explain the gradual decline moving away from the Thames river in the Northwest toward drier parts of the woods (figure 1f). Ultimately, in combination with other socio-ecological factors (e.g. finding suitable mates), badgers may be incapable of completely avoiding all parasites via denning decisions, which could mediate coinfection and promote diverse parasite communities, giving rise to local hotspots

across the population. This may lead to parasite avoidance being traded off against foraging, reproductive success, and survival [22,73]. If badgers exhibit between-individual variation in movement and foraging specialization [74], avoidance of multiple co-infecting parasites could maintain between-individual immune heterogeneity [55]. Notably, only cub density was negatively associated with lice. This observation could be linked to the detectable mortality effects in cubs, driving local cub mortality and/or motivating reproducing females to avoid spatial hotspots of lice.

All of the parasites we examined employ some degree of indirect transmission, likely yielding different relationships with host density than more directly transmitted parasites [1,17]. Ultimately, only avoiding conspecifics can help avoid direct parasite transmission (e.g. [8]), which may not be achievable through purely spatial structuring. Future studies could examine sexually transmitted infections or aerosol-transmitted viruses to investigate whether individuals living in areas of lower density gain any benefit in terms of direct parasite transmission. This may be of particular importance for bovine tuberculosis (bTB), which has a complex, nonlinear relationship with badger sociality [75–77]. Notably, previous bTB studies have generally used social group size as a metric of sociality; given that bTB has an environmental transmission component, particularly between badgers and cattle [78], spatial density metrics, such as those employed here, could be revealing.

We note two potential sources of negative density dependence untested by our modelling approach: the encounter-dilution effect [65,66] and micronutrient impacts on immunity [79]. For the former, where parasites exhibit a constant attack rate in space, greater host densities actually drive a lower per-individual burden of disease because the same number of parasites is divided among more available hosts [65,66]. Because this requires that the spatial distributions of parasites are not tightly linked to the host distribution (e.g. through reproducing on the host), it is unlikely to apply for any of the badger-specific parasites studied here. However, non-host-specific ticks (*Ixodes* sp.) could transmit from other species to badgers in a given area, producing an encounter-dilution effect; therefore, we are unable to rule out this mechanism

(table 2). Regarding nutritional status, we used body condition index as a coarse predictor of the ability to mount a healthy immune response. However, micronutrients are essential to effective immune function [79] and would not be detected from body condition indices; therefore, it is plausible that badgers might congregate in areas of high micronutrient availability. If this behavioural tendency functions to combat pathogens specifically, it amounts to a ‘landscape of disgust’ acting through reduced susceptibility rather than reduced exposure. This possibility could be tested in this or similar systems by comparing the spatial distributions of high-resolution individual-level immune measures (i.e. the ‘landscape of immunity’ [33]) with host density distributions.

Our findings have important implications for the socio-spatial dynamics of this system and its resilience to pathogens and ecological change. If badger populations are organized optimally to occupy areas of least parasite transmission, even small disturbances (e.g. setts lost to forestry) could disrupt its socio-spatial structure and force individuals into unfavourable, more highly parasitized areas, exacerbating their disease burden. Therefore, disruptive anthropogenic activities such as culling-linked perturbation could have unseen consequences for badger disease beyond larger scale movement impacts (e.g. [39,40]). These findings further inform our understanding of the drivers of badger spatial behaviour, offering insights that may be invaluable for their conservation and disease control [38,46].

Data accessibility. Data and code are available at zenodo.org (<https://doi.org/10.5281/zenodo.4283448>).

Authors' contributions. G.F.A. conceived the study, analysed the data, and wrote the manuscript. C.D.B., C.N., and D.W.M. oversaw the system and data collection, and J.G.B. and G.F.A. collected some data. All authors commented on the manuscript and offered advice throughout.

Competing interests. The authors declare no competing interests.

Funding. G.F.A. and S.B. were supported by NSF grant no. 1414296.

Acknowledgements. We would like to thank two anonymous reviewers, and Dan Becker, Amy Sweeny, and Quinn Webber for comments on the manuscript. We also warmly acknowledge the many students and co-workers who helped to collect this substantial dataset.

References

- Cote IM, Poulin R. 1995 Parasitism and group-size in social animals: a meta-analysis. *Behav. Ecol.* **6**, 159–165. (doi:10.1093/beheco/6.2.159)
- Altizer S *et al.* 2003 Social organization and parasite risk in mammals: integrating theory and empirical studies. *Annu. Rev. Ecol. Evol. Syst.* **34**, 517–547. (doi:10.1146/annurev.ecolsys.34.030102.151725)
- Ezenwa VO, Ghai RR, McKay AF, Williams AE. 2016 Group living and pathogen infection revisited. *Curr. Opin. Behav. Sci.* **12**, 66–72. (doi:10.1016/j.cobeha.2016.09.006)
- Kappeler PM, Cremer S, Nunn CL. 2015 Sociality and health: impacts of sociality on disease susceptibility and transmission in animal and human societies. *Phil. Trans. R. Soc. B* **370**, 20140116. (doi:10.1098/rstb.2014.0116)
- Almberg ES, Cross PC, Dobson AP, Smith DW, Metz MC, Stahler DR, Hudson PJ. 2015 Social living mitigates the costs of a chronic illness in a cooperative carnivore. *Ecol. Lett.* **18**, 660–667. (doi:10.1111/ele.12444)
- Stewart PD, Macdonald DW. 2003 Badgers and badger fleas: strategies and counter-strategies. *Ethology* **109**, 751–764. (doi:10.1046/j.1439-0310.2003.00910.x)
- Madden JR, Clutton-Brock TH. 2009 Manipulating grooming by decreasing ectoparasite load causes unpredicted changes in antagonism. *Proc. R. Soc. B* **276**, 1263–1268. (doi:10.1098/rspb.2008.1661)
- Poirotte C, Massol F, Herbert A, Willaume E, Bomo PM, Kappeler PM, Charpentier MJE. 2017 Mandrills use olfaction to socially avoid parasitized conspecifics. *Sci. Adv.* **3**, e1601721. (doi:10.1126/sciadv.1601721)
- Meunier J. 2015 Social immunity and the evolution of group living in insects. *Phil. Trans. R. Soc. B* **370**, 19–21. (doi:10.1098/rstb.2014.0102)
- Cremer S, Armitage SAO, Schmid-Hempel P. 2007 Social immunity. *Curr. Biol.* **17**, 693–702. (doi:10.1016/j.cub.2007.06.008)
- Baracchi D, Fadda A, Turillazzi S. 2012 Evidence for antiseptic behaviour towards sick adult bees in honey bee colonies. *J. Insect Physiol.* **58**, 1589–1596. (doi:10.1016/j.jinsphys.2012.09.014)
- Bachorec E *et al.* 2020 Spatial networks differ when food supply changes: foraging strategy of Egyptian fruit bats. *PLoS ONE* **15**, e0229110. (doi:10.1371/journal.pone.0229110)

13. Methion S, Díaz López B. 2019 Individual foraging variation drives social organization in bottlenose dolphins. *Behav. Ecol.* **31**, 97–106. (doi:10.1093/beheco/arz160)
14. Webber QMR, Laforce MP, Bonar M, Robitaille AL, Hart C, Zabih-Seissan S, Vander Wal E. 2020 The ecology of individual differences empirically applied to space-use and movement tactics. *Am. Naturalist. Am. Nat.* **196**, E1–E15. (doi:10.1086/708721)
15. Webber QMR. 2018 An evolutionary framework outlining the integration of individual social and spatial ecology. *J. Anim. Ecol.* **87**, 113–127. (doi:10.1111/1365-2656.12773)
16. Becker DJ, Albery GF, Kessler MK, Lunn TJ, Falvo CA, Czirják GÁ, Martin LB, Plowright RK. 2019 Macroimmunology: the drivers and consequences of spatial patterns in wildlife immune defense. *J. Anim. Ecol.* **89**, 972–995. (doi:10.1111/1365-2656.13166)
17. Albery GF, Kirkpatrick L, Firth JA, Bansal S. 2020 Unifying spatial and social network analysis in disease ecology. *J. Anim. Ecol.* 1–17. (doi:10.1111/1365-2656.13356)
18. Weinstein SB, Moura CW, Mendez JF, Lafferty KD. 2017 Fear of feces? Tradeoffs between disease risk and foraging drive animal activity around raccoon latrines. *Oikos* **127**, 927–934. (doi:10.1111/oik.04866)
19. Curtis VA. 2014 Infection-avoidance behaviour in humans and other animals. *Trends Immunol.* **35**, 457–464. (doi:10.1016/j.it.2014.08.006)
20. Stockmaier S, Bolnick DI, Page RA, Carter GG. 2018 An immune challenge reduces social grooming in vampire bats. *Anim. Behav.* **140**, 141–149. (doi:10.1016/j.anbehav.2018.04.021)
21. Weinstein SB, Buck JC, Young HS. 2018 A landscape of disgust. *Science* **359**, 1213–1215. (doi:10.1126/science.aas8694)
22. Buck JC, Weinstein SB, Young HS. 2018 Ecological and evolutionary consequences of parasite avoidance. *Trends Ecol. Evol.* **33**, 619–632. (doi:10.1016/j.tree.2018.05.001)
23. Hopkins SR, Fleming-Davies AE, Belden LK, Wojdak JM, Fleming-Davies AE, Belden LK, Wojdak JM. 2020 Systematic review of modeling assumptions and empirical evidence: does parasite transmission increase nonlinearly with host density? *Methods Ecol. Evol.* **11**, 476–486. (doi:10.1111/2041-210x.13361)
24. Ezenwa VO. 2004 Host social behavior and parasitic infection: a multifactorial approach. *Behav. Ecol.* **15**, 446–454. (doi:10.1093/beheco/arh028)
25. Downs CJ, Stewart KM, Dick BL. 2015 Investment in constitutive immune function by north American elk experimentally maintained at two different population densities. *PLoS ONE* **10**, 1–17. (doi:10.1371/journal.pone.0125586)
26. Brown CR, Brown MB. 1986 Ectoparasitism as a cost of coloniality in cliff swallows (*Hirundo pyrrhonota*). *Ecology* **67**, 1206–1218. (doi:10.2307/1938676)
27. Rifkin JL, Nunn CL, Garamszegi LZ. 2012 Do animals living in larger groups experience greater parasitism? A meta-analysis. *Am. Nat.* **180**, 70–82. (doi:10.1086/666081)
28. MacIntosh AJJ, Jacobs A, Garcia C, Shimizu K, Mouri K, Huffman MA, Hernandez AD. 2012 Monkeys in the middle: parasite transmission through the social network of a wild primate. *PLoS ONE* **7**, 15–21. (doi:10.1371/journal.pone.0051144)
29. VanderWaal KL, Atwill ER, Isbell LA, McCowan B. 2014 Linking social and pathogen transmission networks using microbial genetics in giraffe (*Giraffa camelopardalis*). *J. Anim. Ecol.* **83**, 406–414. (doi:10.1111/1365-2656.12137)
30. Drewe JA. 2010 Who infects whom? Social networks and tuberculosis transmission in wild meerkats. *Proc. R. Soc. B* **277**, 633–642. (doi:10.1098/rspb.2009.1775)
31. Pullan RL, Sturrock HJW, Soares Magalhaes RJ, Clements ACA, Brooker SJ. 2012 Spatial parasite ecology and epidemiology: a review of methods and applications. *Parasitology* **139**, 1870–1887. (doi:10.1017/S0031182012000698)
32. Kirby RS, Delmelle E, Eberth JM. 2017 Advances in spatial epidemiology and geographic information systems. *Ann. Epidemiol.* **27**, 1–9. (doi:10.1016/j.annepidem.2016.12.001)
33. Albery GF, Becker DJ, Kenyon F, Nussey DH, Pemberton JM. 2019 The fine-scale landscape of immunity and parasitism in a wild ungulate population. *Integr. Comp. Biol.* **59**, 165–175. (doi:10.1093/icb/icz016)
34. Manlove K, Aiello C, Sah P, Cummins B, Hudson PJ, Cross PC. 2018 The ecology of movement and behaviour: a saturated tripartite network for describing animal contacts. *Proc. R. Soc. B* **285**, 20180670. (doi:10.1098/rspb.2018.0670)
35. Richardson TO, Gorochowski TE. 2015 Beyond contact-based transmission networks: the role of spatial coincidence. *J. R. Soc. Interface* **12**, 20150705. (doi:10.1098/rsif.2015.0705)
36. Leu ST, Sah P, Krzyszczyk E, Jacoby A, Mann J. 2020 Sex, synchrony, and skin contact: integrating multiple behaviors to assess pathogen transmission risk. *Behav. Ecol.* **31**, 651–660. (doi:10.1093/beheco/araa002)
37. Macdonald DW, Newman C, Buesching CD. 2015 Badgers in the rural landscape—conservation paragon or farmland pariah? Lessons from the Wytham Badger Project. In *Wildlife conservation on farmland*, Volume 2, pp. 65–95. Oxford, UK: Oxford University Press.
38. McDonald JL, Robertson A, Silk MJ. 2018 Wildlife disease ecology from the individual to the population: insights from a long-term study of a naturally infected European badger population. *J. Anim. Ecol.* **87**, 101–112. (doi:10.1111/1365-2656.12743)
39. Ham C, Donnelly CA, Astley KL, Jackson SYB, Woodroffe R. 2019 Effect of culling on individual badger *Meles meles* behaviour: potential implications for bovine tuberculosis transmission. *J. Appl. Ecol.* **56**, 2390–2399. (doi:10.1111/1365-2664.13512)
40. Tuytens FAM, Delahay RJ, MacDonald DW, Cheeseman CL, Long B, Donnelly CA. 2000 Spatial perturbation caused by a badger (*Meles meles*) culling operation: implication for the function of territoriality and the control of bovine tuberculosis (*Mycobacterium bovis*). *J. Appl. Ecol.* **69**, 815–828. (doi:10.1046/j.1365-2656.2000.00437.x)
41. Donnelly CA *et al.* 2007 Impacts of widespread badger culling on cattle tuberculosis: concluding analyses from a large-scale field trial. *Int. J. Infect. Dis.* **11**, 300–308. (doi:10.1016/j.ijid.2007.04.001)
42. Rozins C, Silk MJ, Croft DP, Delahay RJ, Hodgson DJ, McDonald RA, Weber N, Boots M. 2018 Social structure contains epidemics and regulates individual roles in disease transmission in a group-living mammal. *Ecol. Evol.* **8**, 12 044–12 055. (doi:10.1002/ece3.4664)
43. Silk MJ, Weber NL, Steward LC, Hodgson DJ, Boots M, Croft DP, Delahay RJ, McDonald RA. 2018 Contact networks structured by sex underpin sex-specific epidemiology of infection. *Ecol. Lett.* **21**, 309–318. (doi:10.1111/ele.12898)
44. Weber N, Carter SP, Dall SRX, Delahay RJ, McDonald JL, Bearhop S, McDonald RA. 2013 Badger social networks correlate with tuberculosis infection. *Curr. Biol.* **23**, R915–R916. (doi:10.1016/j.cub.2013.09.011)
45. Macdonald DW, Newman C. 2002 Population dynamics of badgers (*Meles meles*) in Oxfordshire, U.K.: numbers, density and cohort life histories, and a possible role of climate change in population growth. *J. Zool.* **256**, 121–138. (doi:10.1017/S0952836902000158)
46. Macdonald DW, Newman C, Dean J, Buesching CD, Johnson PJ. 2004 The distribution of Eurasian badger, *Meles meles*, setts in a high-density area: field observations contradict the sett dispersion hypothesis. *Oikos* **106**, 295–307. (doi:10.1111/j.0030-1299.2004.12879.x)
47. Macdonald DW, Newman C, Buesching CD, Johnson PJ. 2008 Male-biased movement in a high-density population of the Eurasian Badger (*Meles meles*). *J. Mammal.* **89**, 1077–1086. (doi:10.1644/07-mamm-a-185.1)
48. Annavi G, Newman C, Dugdale HL, Buesching CD, Sin YW, Burke T, Macdonald DW. 2014 Neighbouring-group composition and within-group relatedness drive extra-group paternity rate in the European badger (*Meles meles*). *J. Evol. Biol.* **27**, 2191–2203. (doi:10.1111/jeb.12473)
49. Cox R, Stewart PD, Macdonald DW. 1999 The ectoparasites of the European badger, *Meles meles*, and the behavior of the host-specific flea, *Paraceras melis*. *J. Insect Behav.* **12**, 245–265. (doi:10.1023/A:1020923001987)
50. Anwar MA, Newman C, Macdonald DW, Woolhouse MEJ, Kelly DW. 2000 Coccidiosis in the European badger (*Meles meles*) from England, an epidemiological study. *Parasitology* **120**, 255–260. (doi:10.1017/S0031182099005491)
51. Newman C, Macdonald DW, Anwar MA. 2001 Coccidiosis in the European badger, *Meles meles* in Wytham Woods: infection and consequences for growth and survival. *Parasitology* **123**, 133–142. (doi:10.1017/S0031182001008265)

52. Johnson DDP, Stopka P, Macdonald DW. 2004 Ideal flea constraints on group living: unwanted public goods and the emergence of cooperation. *Behav. Ecol.* **15**, 181–186. (doi:10.1093/beheco/arg093)
53. Buesching CD, Newman C, Service K, Macdonald DW, Riordan P. 2016 Latrine marking patterns of badgers (*Meles meles*) with respect to population density and range size. *Ecosphere* **7**, e01328. (doi:10.1002/ecs2.1328)
54. Franks DW, Ruxton GD, James R. 2010 Sampling animal association networks with the gambit of the group. *Behav. Ecol. Sociobiol.* **64**, 493–503. (doi:10.1007/s00265-009-0865-8)
55. Sin YW, Annavi G, Dugdale HL, Newman C, Burke T, Macdonald DW. 2014 Pathogen burden, co-infection and major histocompatibility complex variability in the European badger (*Meles meles*). *Mol. Ecol.* **23**, 5072–5088. (doi:10.1111/mec.12917)
56. R Core Team. 2020 *R: A language and environment for statistical computing*. Vienna, Austria: R Foundation for Statistical Computing.
57. Lindgren F, Rue H. 2015 Bayesian spatial modelling with R-INLA. *J. Stat. Softw.* **63**, 1–25. (doi:10.18637/jss.v063.i19)
58. Lindgren F, Rue H, Lindstrom J. 2011 An explicit link between Gaussian fields and Gaussian Markov random fields: the stochastic partial differential equation approach. *J. R. Stat. Soc. B* **73**, 423–498. (doi:10.1111/j.1467-9868.2011.00777.x)
59. Calenge C. 2011 Home range estimation in R: the adehabitatHR package. See <https://cran.r-project.org/web/packages/adehabitatHR/index.html> (accessed on 10 March 2020).
60. Hadfield JD. 2010 MCMC methods for multi-response generalized linear mixed models: the MCMCglmm R package. *J. Stat. Softw.* **33**, 1–22. (doi:10.1002/ana.22635)
61. Brommer JE, Covarrubias-Pazaran G. 2019 Multivariate mixed models in ecology and evolutionary biology: inference and implementation in R. *EcoEvoRxiv Prepr.* (doi:10.1017/CBO9781107415324.004)
62. Strandin T, Babayan SA, Forbes KM. 2018 Reviewing the effects of food provisioning on wildlife immunity. *Phil. Trans. R. Soc. B* **373**, 20170088. (doi:10.1098/rstb.2017.0088)
63. Sweeny AR, Clerc M, Pontifes PA, Venkatesan S, Babayan SA, Pedersen AB. 2019 Supplemented nutrition increases immunity and drug efficacy in a natural host-helminth system, 1–43. (doi:10.1101/837617)
64. Butler JM, Roper TJ. 1996 Ectoparasites and sett use in European badgers. *Anim. Behav.* **52**, 621–629. (doi:10.1006/anbe.1996.0203)
65. Buck JC, Hechinger RF, Wood AC, Stewart TE, Kuris AM, Lafferty KD. 2017 Host density increases parasite recruitment but decreases host risk in a snail—trematode system. Published by: Wiley on behalf of the Ecological Society of America Stable URL: <http://www.jstor.com/stable/26601143> Host density increases parasite recruit. *Ecology* **98**, 2029–2038. (doi:10.1002/ecy.1905)
66. Mooring MS, Hart BL. 1992 Animal grouping for protection from parasites: selfish herd and encounter-dilution effects. *Behaviour* **123**, 173–193. (doi:10.2307/4535069)
67. Ezenwa VO. 2016 Helminth-microparasite co-infection in wildlife: lessons from ruminants, rodents, and rabbits. *Parasite Immunol.* **38**, 527–534. (doi:10.1111/pim.12348)
68. Poirotte C, Kappeler PM. 2019 Hygienic personalities in wild grey mouse lemurs vary adaptively with sex. *Proc. R. Soc. B* **286**, 20190863. (doi:10.1098/rspb.2019.0863)
69. Newman C, Buesching CD. 2019 Detecting the Smell of Disease and Injury: Scoping Evolutionary and Ecological Implications. In *Chemical signals in vertebrates 14*, pp. 238–250. Cham, The Switzerland: Springer International Publishing.
70. Brøseth H, Bevanger K, Knutsen B. 1997 Function of multiple badger *Meles meles* setts: distribution and utilisation. *Wildlife Biol.* **3**, 89–96. (doi:10.2981/wlb.1997.011)
71. Tsunoda M, Newman C, Buesching CD, Macdonald DW, Kaneko Y. 2018 Badger setts provide thermal refugia, buffering changeable surface weather conditions. *J. Therm. Biol.* **74**, 226–233. (doi:10.1016/j.jtherbio.2018.04.005)
72. Kaneko Y, Newman C, Buesching CD, MacDonald DW. 2010 Variations in badger (*Meles meles*) sett microclimate: differential cub survival between main and subsidiary setts, with implications for artificial sett construction. *Int. J. Ecol.* **2010**, 1–10. (doi:10.1155/2010/859586)
73. Hutchings MR, Judge J, Gordon IJ, Athanasiadou S, Kyriazakis I. 2006 Use of trade-off theory to advance understanding of herbivore-parasite interactions. *Mamm. Rev.* **36**, 1–16. (doi:10.1111/j.1365-2907.2006.00080.x)
74. Robertson A, McDonald RA, Delahay RJ, Kelly SD, Bearhop S. 2014 Individual foraging specialisation in a social mammal: the European badger (*Meles meles*). *Oecologia* **176**, 409–421. (doi:10.1007/s00442-014-3019-2)
75. Benton CH, Delahay RJ, Robertson A, McDonald RA, Wilson AJ, Burke TA, Hodgson D. 2016 Blood thicker than water: kinship, disease prevalence and group size drive divergent patterns of infection risk in a social mammal. *Proc. R. Soc. B* **283**, 20160798. (doi:10.1098/rspb.2016.0798)
76. Delahay RJ, Walker N, Smith GS, Wilkinson D, Clifton-Hadley RS, Cheeseman CL, Tomlinson AJ, Chambers MA. 2013 Long-term temporal trends and estimated transmission rates for *Mycobacterium bovis* infection in an undisturbed high-density badger (*Meles meles*) population. *Epidemiol. Infect.* **141**, 1445–1456. (doi:10.1017/S0950268813000721)
77. Woodroffe R *et al.* 2009 Social group size affects *Mycobacterium bovis* infection in European badgers (*Meles meles*). *J. Anim. Ecol.* **78**, 818–827. (doi:10.1111/j.1365-2656.2009.01545.x)
78. Woodroffe R, Donnelly CA, Ham C, Jackson SYB, Moyes K. 2016 Badgers prefer cattle pasture but avoid cattle: implications for bovine tuberculosis control. *Ecol. Lett.* **19**, 1201–1208. (doi:10.1111/ele.12654)
79. Calder PC, Jackson AA. 2000 Undernutrition, infection and immune function. *Nutr. Res. Rev.* **13**, 3–29. (doi:10.1079/095442200108728981)